

Kids MENU

MAG 'N CHEESE

Warm & gooey macaroni and cheese.

FISH 6166IN' STICKS

3 Corn Flake Crusted American Red Snapper Fried Fish Sticks

LIL' SKRIMP'S SHRIMPS

Popcorn Shrimp Fried to Perfection

CHEESE BURGER

SLIDERS

Indulge in 2 juicy beef patties topped with gooey melted cheese, all sandwiched between soft and flavorful Hawaiian bread.

GRILLED CHEESE

SANDWICH

toasted to scrumptiousness!

BUTTERED NOODLES

Egg Noodles Sauteed with Butter & parmesan cheese

CAPTAIN CHRIS'

CHICKEN NUGGETS

Bitesized Fried Chicken Breast

MINI CORN DOGS

Corn Battered Beef and Pork Dogs

CHICKEN TACOS

2 tacos on flour tortillas, lettuce, tomatoes, taco crema

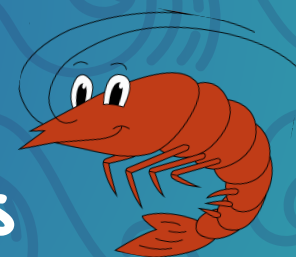
Each meal \$10.00

All meals come with a choice of fries, veggies, or a fruit bowl.

Add Bluebell Ice Cream for \$3

Vanilla, Dutch Chocolate, Butter Pecan, Happy Tracks

Adults will be charged \$5.00 extra



DRINKS

FOUNTAIN SODA

Unlimited refills

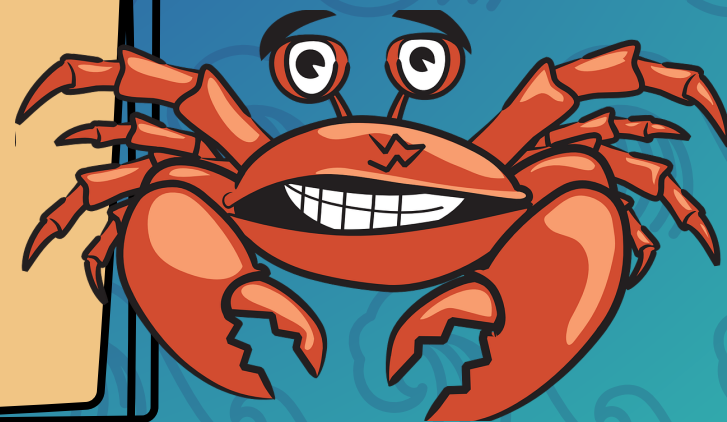
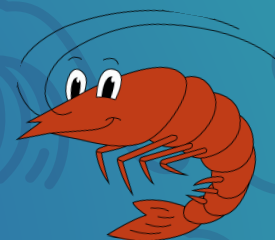
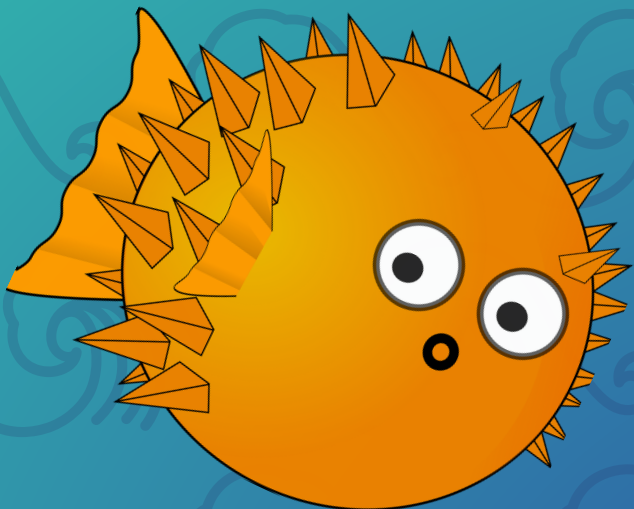
MILK

Choose whole, chocolate or strawberry milk

OR

ADD A JUICE BOX \$1.75

100% fruit juice. Choose apple, orange, or grape



Kids MENU

FISH JOKES!!!

WHY ARE FISH SO EASY TO WEIGH?

Because they have their own scales.

WHY ARE FISH SO SMART?

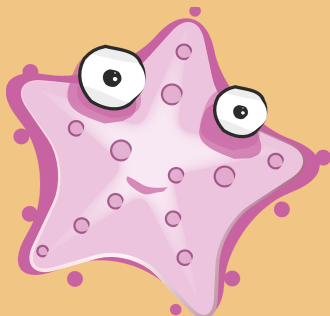
Because they are always in schools!

WHAT DO YOU CALL A FANCY FISH?

So-fish-ticated

WHAT KIND OF FISH ONLY COMES OUT AT NIGHT?

A starfish



HOW DO SHELLFISH GET TO THE HOSPITAL?

In a clambulance

WHAT'S THE DIFFERENCE BETWEEN A PIANO AND A FISH?

You can't tuna fish!

WHY DID THE CRAB NEVER SHARE?

Because he was shellfish!

IF YOU CAN THINK OF A BETTER FISH PUN.

Let minnow!!!

